

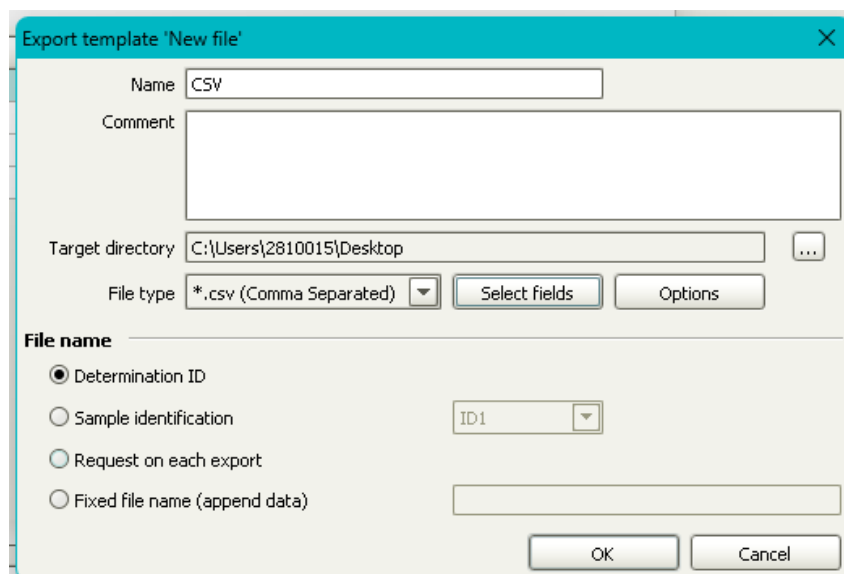
Create an Export Template (.csv) - tiamo

Guidance for creating a .csv export template.

Technology: Titration

Instructions for Template Creation:

1. Launch tiamo software
2. Click Database tab
3. Click Tools > Templates > Export templates...
4. Click 'New'
5. Create a template with the following properties:
 - a. Name: CSV (or similar)
 - b. Target directory: location on hard drive or network drive (click the button to right of field to search for a folder – click “New Directory” to create a new folder)
 - c. File type: *.csv (Comma Separated)
 - d. File name:
 - i. Determination ID – automatic unique ID assigned by tiamo
 - ii. Sample identification – file name based on user-entered ID
 - iii. Request on each export
 - iv. Fixed file name (append data) – file name of your choice (exported data appended to same file)



Export template 'New file'

Name: CSV

Comment:

Target directory: C:\Users\2810015\Desktop

File type: *.csv (Comma Separated)

Select fields Options

File name

Determination ID

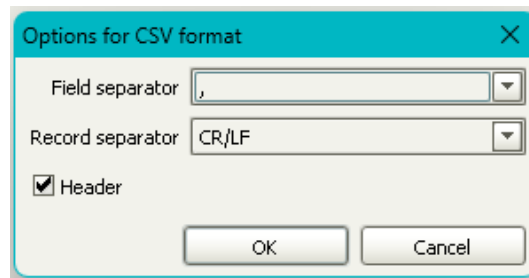
Sample identification ID1

Request on each export

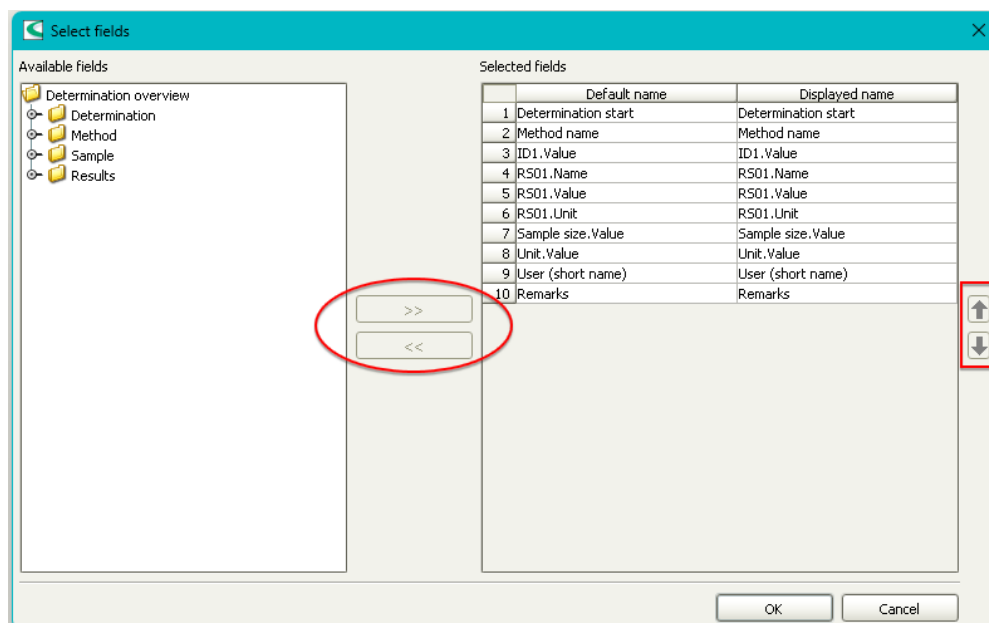
Fixed file name (append data)

OK Cancel

6. Click 'Options'
 - a. Field separator: select the comma
 - b. Record separator: select CR/LF
 - c. Header: Check this if you want the 'displayed name' as defined in the 'Select fields' menu (see step 7 below) at the top of each column in the export file



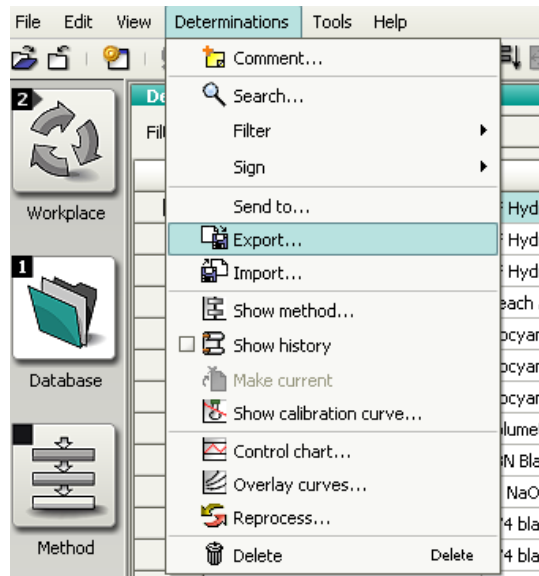
7. Click 'Select fields'
 - a. Highlight fields from the left panel and click the >> button in the middle of the window to move to right panel – to be included in export file
 - b. Highlight fields from the right panel and click the << button in the middle of the window to move to the left panel – to be removed from the export file
 - c. You can reorder the fields by highlighting the field name and using the up/down arrows on the far right of the window



8. Click 'OK' to store new template
9. Click 'Close' to exit the template window

How to Manually Export:

1. Click Database tab
2. If current Database not already open, click File > Open and select appropriate database
3. Select all determinations you wish to export in the Determination Overview
4. Click Determinations > Export

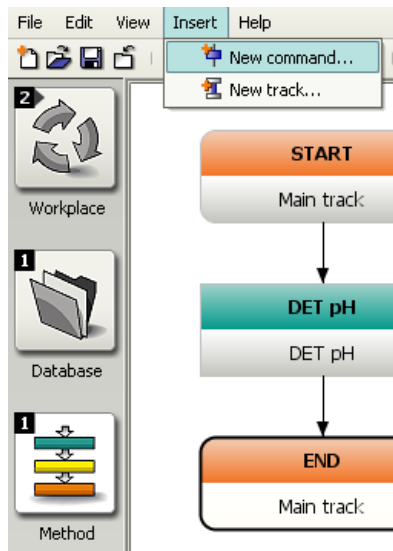


5. Select your newly created Export template
6. The files will be exported to the 'Target directory' as programmed in the template

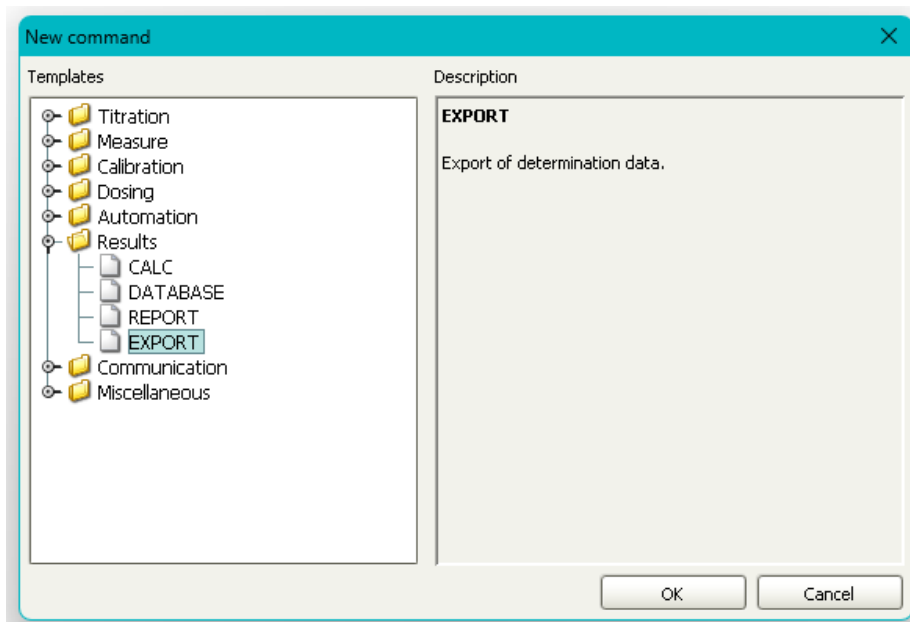
Set Up Automatic Export in Method

To automatically export determination(s) after titration is completed, add an EXPORT command into your tiamo Method.

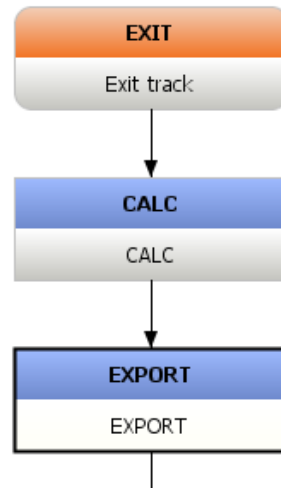
1. Click Method tab
2. Click File > Open and select method in which you would like to add automatic export
3. Click Insert > New command



4. Double click on 'Results' folder to open
5. Select 'EXPORT'



6. Click 'OK' - you will see the new EXPORT command in the Method
7. Click and hold the EXPORT command, drag and place after the CALC command



8. Double click on the EXPORT command to open the Properties of the command
9. Select your newly created export template
10. Click 'OK'
11. Click File > Save to save the updated Method

Other ideas

'Submit a request' for further assistance from Metrohm Technical Support at support.metrohmusa.com.