

Managing Databases – MagIC Net & tiamo

With this document, you will learn to back up your databases manually, set up automatic backup, create a new backup directory, delete and create new databases. Metrohm recommends databases larger than 1GB be backed up and archived.

Technology: Ion Chromatography, Titration

Procedure Using Default Backup Directory

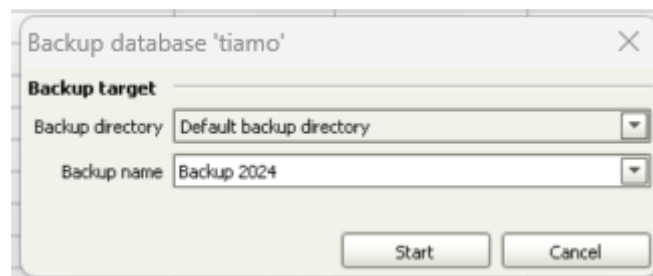
Default Backup Directory MagIC Net: C:\ProgramData\Metrohm\MagIC Net\Backup

Default Backup Directory tiamo: C:\ProgramData\Metrohm\Tiamo\Backup

1. Launch the software
2. Click Database tab
 - a. If database you wish to back up is open, click File > Close
3. Click File > Database manager
4. Select database you wish to backup
5. Click Backup



6. Select the Default backup directory from the drop down menu
7. Assign name to backup
8. Click Start

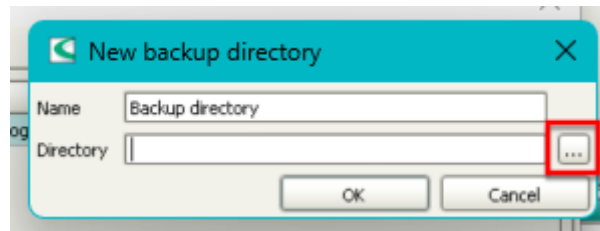


Depending on size of database, this can take seconds to minutes to complete.

Check the directory on the C:\ drive to ensure backup was completed.

Procedure to Create New Backup Directory

1. Launch software
2. Click Configuration > Tools > Program administration
3. Click New – enter name for your new backup directory
4. Click ... and select your directory location

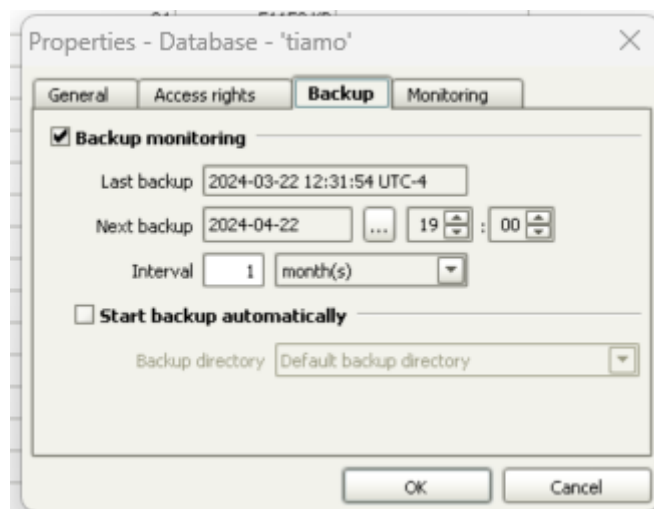


5. Click OK

To use this new backup directory to create backup, follow [previous section](#); for step 6, select your newly created directory.

Procedure to Setup Automatic Backup

1. Launch software
2. Click Database > File > Database manager
3. Select database in which you wish to automate backup
4. Click Properties
5. Click Backup tab
6. Enable Backup monitoring



7. Select interval in which you wish to schedule backup

8. Enable Start backup automatically



9. Select your backup directory, default or otherwise
10. Click OK

NOTE: User with read/write access to the backup directory must be logged onto the PC at time in which the backup is scheduled to be completed. Software does not need to be open.

Procedure to Delete Database & Create New

1. Launch software
2. Click Database > File > Database manager
3. Select the database and complete backup as outlined above
4. Confirm backup created in backup directory on your PC
5. Note name of database
6. Click Edit > Delete
7. Click Edit > New – type name of database which was noted in step 5

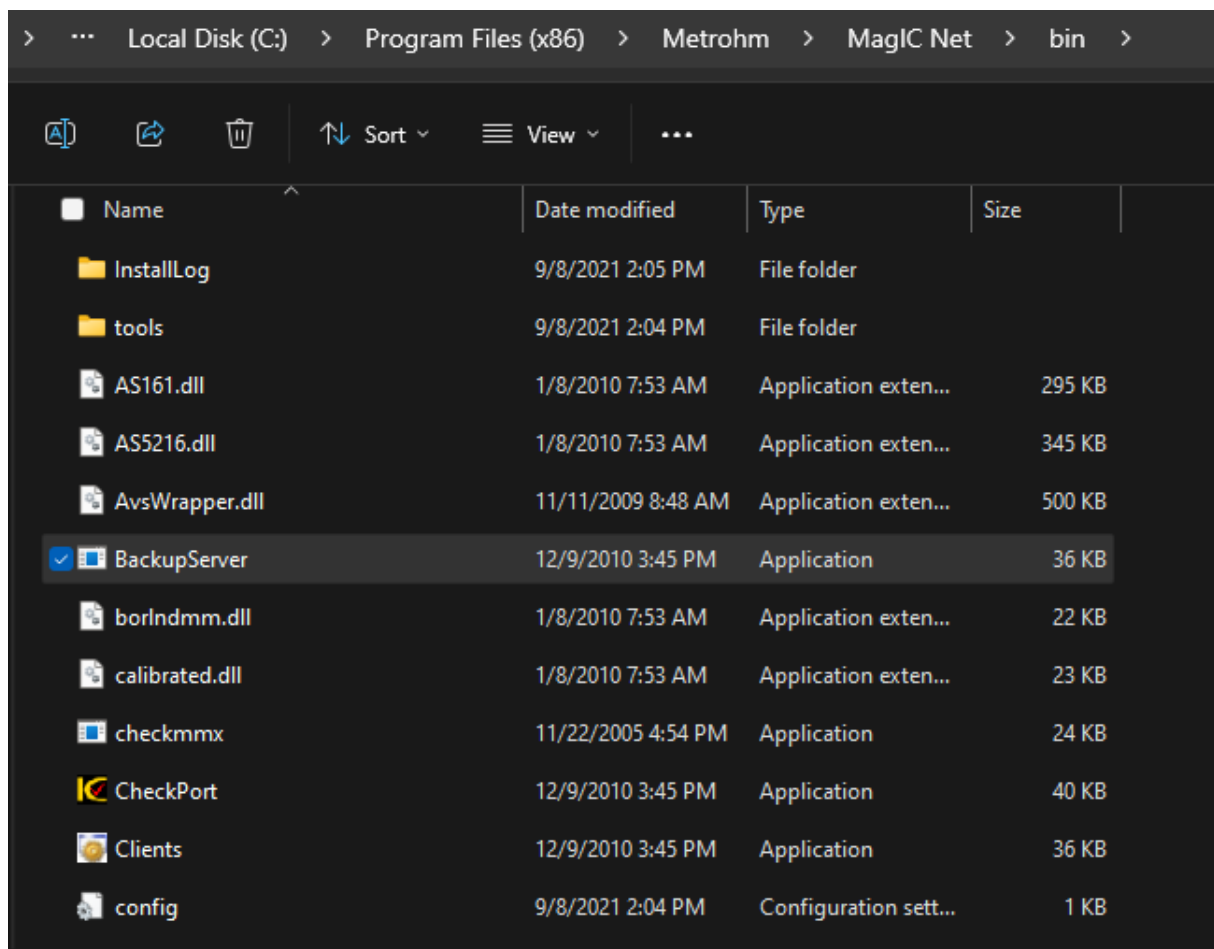
If you wish to retain the backed up database in the software but start new database:

8. Follow steps 1 – 5 above
9. Click Edit > Rename – type new name for database, different than previous
10. Click Edit > New – type name of database which was noted in step 5

NOTE: Backed up databases which have been deleted from software can always be restored (Database > File > Database manager > Restore).

Troubleshooting

- If Backup or Restore is grey in Database manager and not an executable tab:
 1. Verify that User logged into software and/or PC has proper administration rights
 2. Verify that the BackupServer is running
 - a. For tiamo, locate C:\Program Files (x86)\Metrohm\tiamo\bin
 - b. For MagIC Net, locate C:\Program Files (x86)\Metrohm\MagIC Net\bin
 - c. Double click on BackupServer



- If backup folder created in your backup directory has special characters, i.e. \$\$, the backup was not created properly. Delete the backup folder and try again.
- 'Submit a request' for further assistance from Metrohm Technical Support at support.metrohmusa.com.