

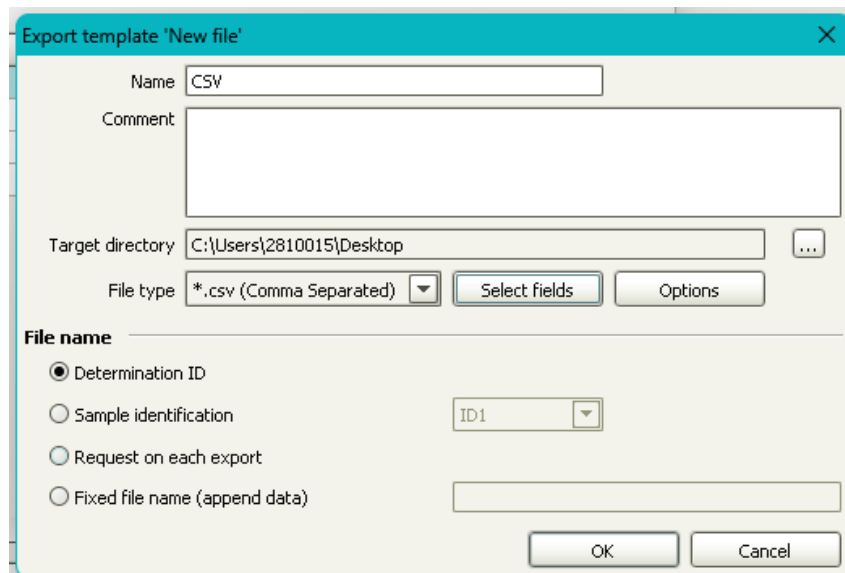
Create an Export Template (.csv) – MagIC Net

Guidance for creating a .csv export template.

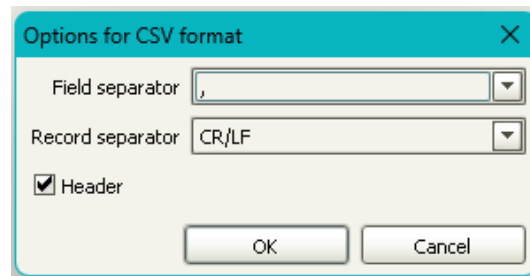
Technology: Ion Chromatography

Instructions for Template Creation:

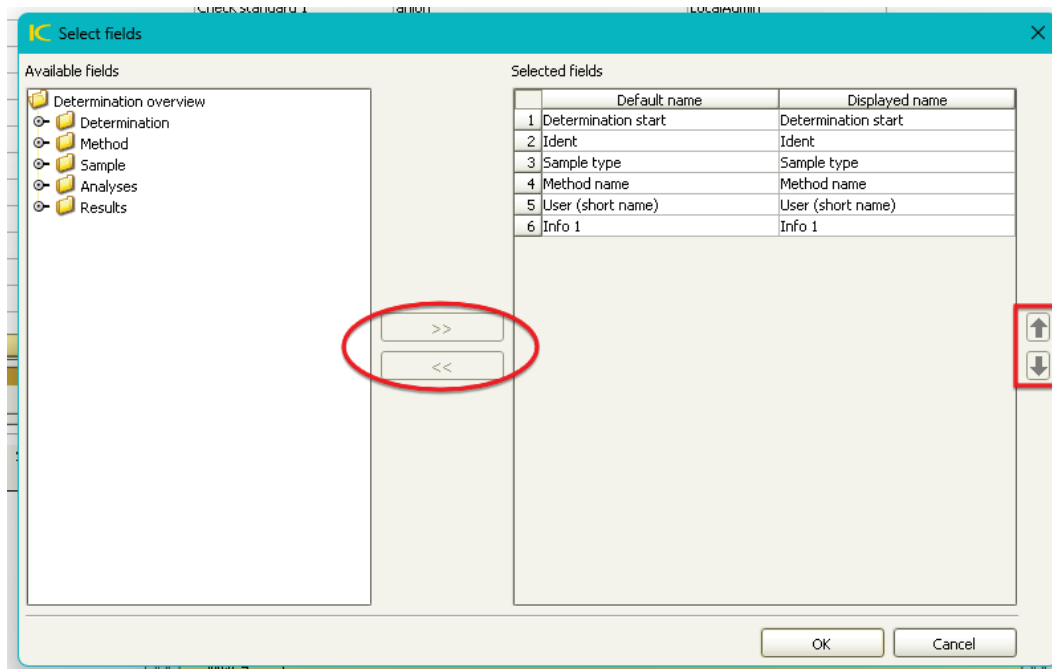
1. Launch MagIC Net software
2. Click Database tab
3. Click Tools > Templates > Export templates...
4. Click 'New'
5. Create a template with the following properties:
 - a. Name: CSV (or similar)
 - b. Target directory: location on hard drive or network drive (click the button to right of field to search for a folder – click "New Directory" to create a new folder)
 - c. File type: *.csv (Comma Separated)
 - d. File name:
 - i. Determination ID – automatic unique ID assigned by MagIC Net
 - ii. Sample identification – file name based on user-entered ID
 - iii. Request on each export
 - iv. Fixed file name (append data) – file name of your choice (exported data appended to same file)



6. Click 'Options'
 - a. Field separator: select the comma
 - b. Record separator: select CR/LF
 - c. Header: Check this if you want the 'displayed name' as defined in the 'Select fields' menu (see step 7 below) at the top of each column in the export file



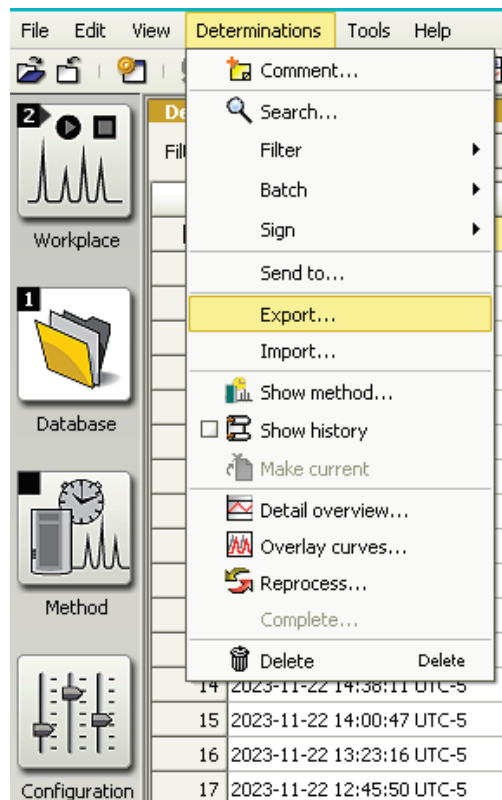
7. Click 'Select fields'
 - a. Highlight fields from the left panel and click the >> button in the middle of the window to move to right panel – to be included in export file
 - b. Highlight fields from the right panel and click the << button in the middle of the window to move to the left panel – to be removed from the export file
 - c. You can reorder the fields by highlighting the field name and using the up/down arrows on the far right of the window



8. Click 'OK' to store new template
9. Click 'Close' to exit the template window

How to Manually Export:

1. Click Database tab
2. If current Database not already open, click File > Open and select appropriate database
3. Select all determinations you wish to export in the Determination Overview
4. Click Determinations > Export

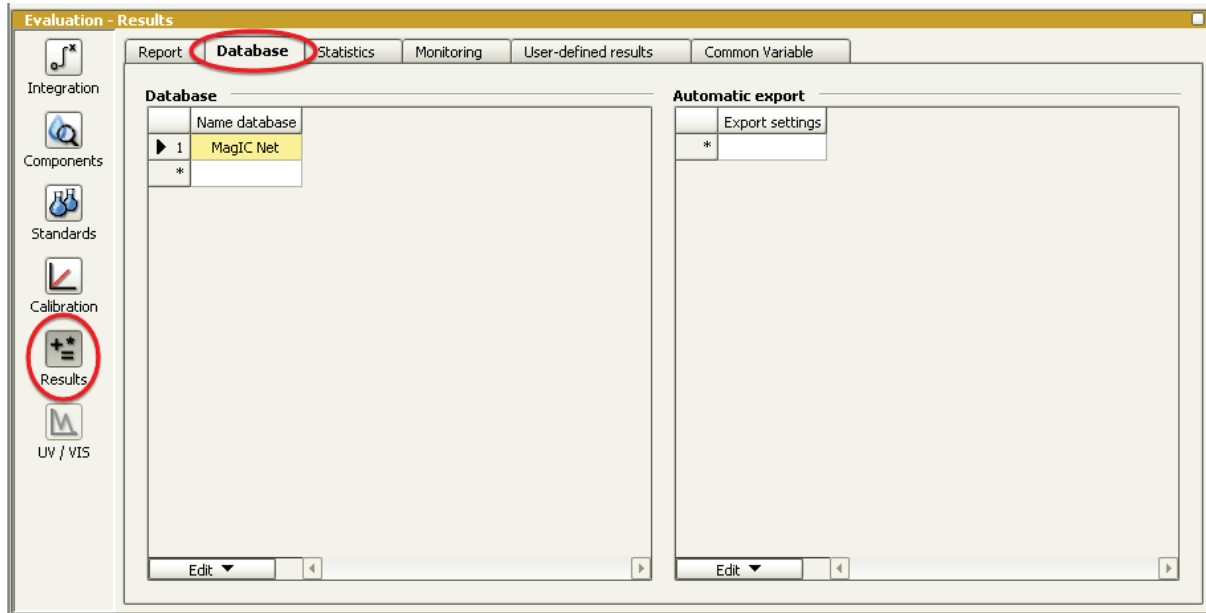


5. Select your newly created Export template
6. The files will be exported to the 'Target directory' as programmed in the template

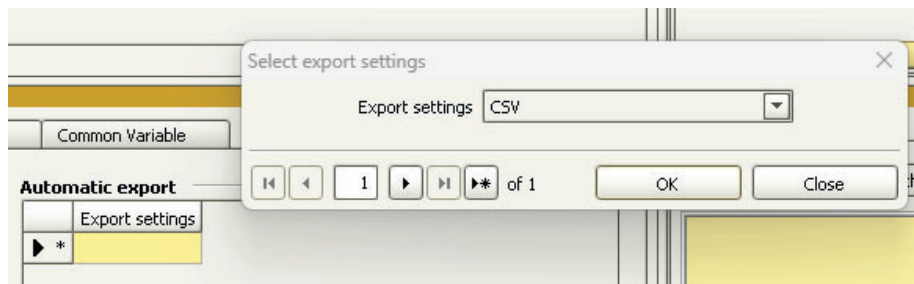
Set Up Automatic Export in Method

To automatically export determination(s) after determination is completed, add Automatic Export settings into your MagIC Net Method.

1. Click Method tab
2. Click File > Open and select method in which you would like to add automatic export
3. In Evaluation panel, click Results > Database tab



4. Double click in 'Export settings' box to open
5. Use the drop down menu to select your newly created export template



6. Click 'OK'
7. Click File > Save to save the updated Method

Other ideas

'Submit a request' for further assistance from Metrohm Technical Support at support.metrohmusa.com.